

Michigan Department of Health and Human Services
Integrated Care Division



Enrollment Dashboard
December 2017

Terminologies and Definitions

Passive Eligibility:

Individuals who meet the full criteria to be passively enrolled into MI Health Link Program

Enrollment:

Individuals currently enrolled in MI Health Link

Passive Enrollment:

An enrollment process through which an eligible individual is enrolled by the MDHHS (or its vendor) into an ICO, following a minimum 60 calendar day advance notification. Eligible individuals are automatically enrolled if they do not chose to opt out of the program

- PACE and MI Choice participants, people with a union or employer sponsored Medicare retirement plan, and those identified as a native American, Alaskan, or migrant are not eligible for passive enrollment
- Effective July 1st 2016, MI Care Team Program participants are not eligible for passive enrollment; however, they will be able to voluntarily enroll in MI Health Link

LOC (Level of Care):

State-specific codes that indicate certain level of healthcare service needs

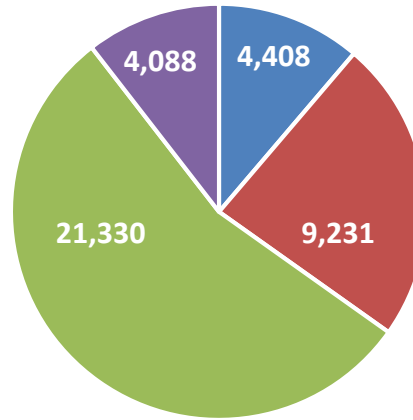
Voluntary Disenrollment:

A beneficiary leaving MI Health Link per the decision of that individual

Involuntary Disenrollment:

A beneficiary leaving MI Health Link per Medicaid criteria

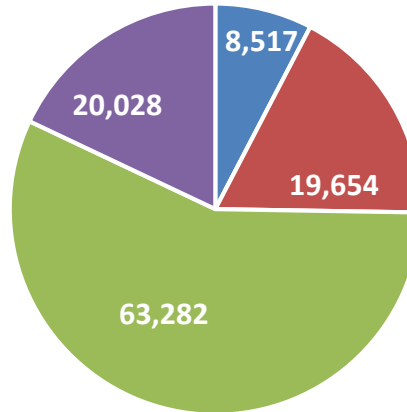
Enrollment by Region



■ 1 (Upper Peninsula) ■ 4 (Southwest) ■ 7 (Wayne) ■ 9 (Macomb)

Region	December	November	Difference	Percentage
1 (Upper Peninsula)	4,408	4,401	7	0.16%
4 (Southwest)	9,231	9,237	(6)	-0.06%
7 (Wayne)	21,330	21,414	(84)	-0.39%
9 (Macomb)	4,088	4,109	(21)	-0.51%
Total	39,057	39,161	(104)	-0.27%

Eligible for Passive Enrollment by Region

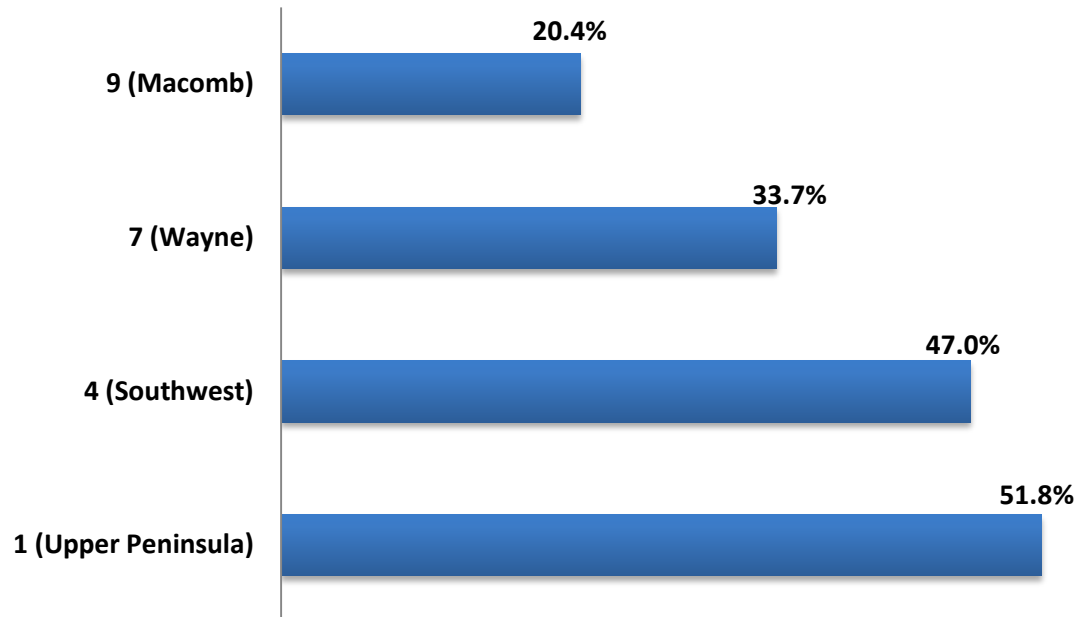


■ 1 (Upper Peninsula) ■ 4 (Southwest) ■ 7 (Wayne) ■ 9 (Macomb)

Region	December	November	Difference	Percentage
1 (Upper Peninsula)	8,517	8,530	(13)	-0.2%
4 (Southwest)	19,654	19,647	7	0.0%
7 (Wayne)	63,282	63,322	(40)	-0.1%
9 (Macomb)	20,028	20,046	(18)	-0.1%
Total	111,481	111,545	(64)	-0.1%

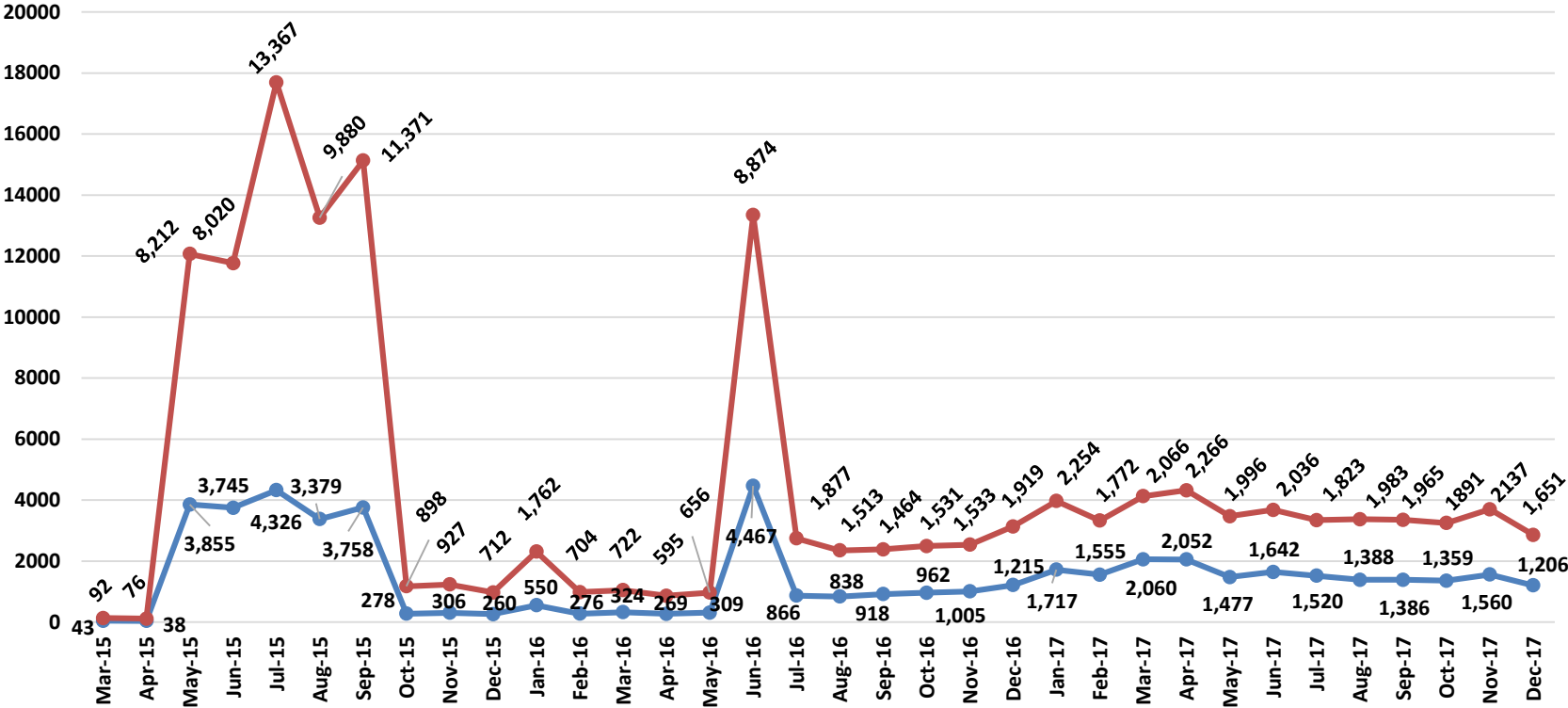
Percent of Enrolled from Population Eligible

Region	Enrolled (December)	Eligible (December)	Enrolled/Eligible December
1 (Upper Peninsula)	4,408	8,517	51.8%
4 (Southwest)	9,231	19,654	47.0%
7 (Wayne)	21,330	63,282	33.7%
9 (Macomb)	4,088	20,028	20.4%
Total	39,057	111,481	35.0%

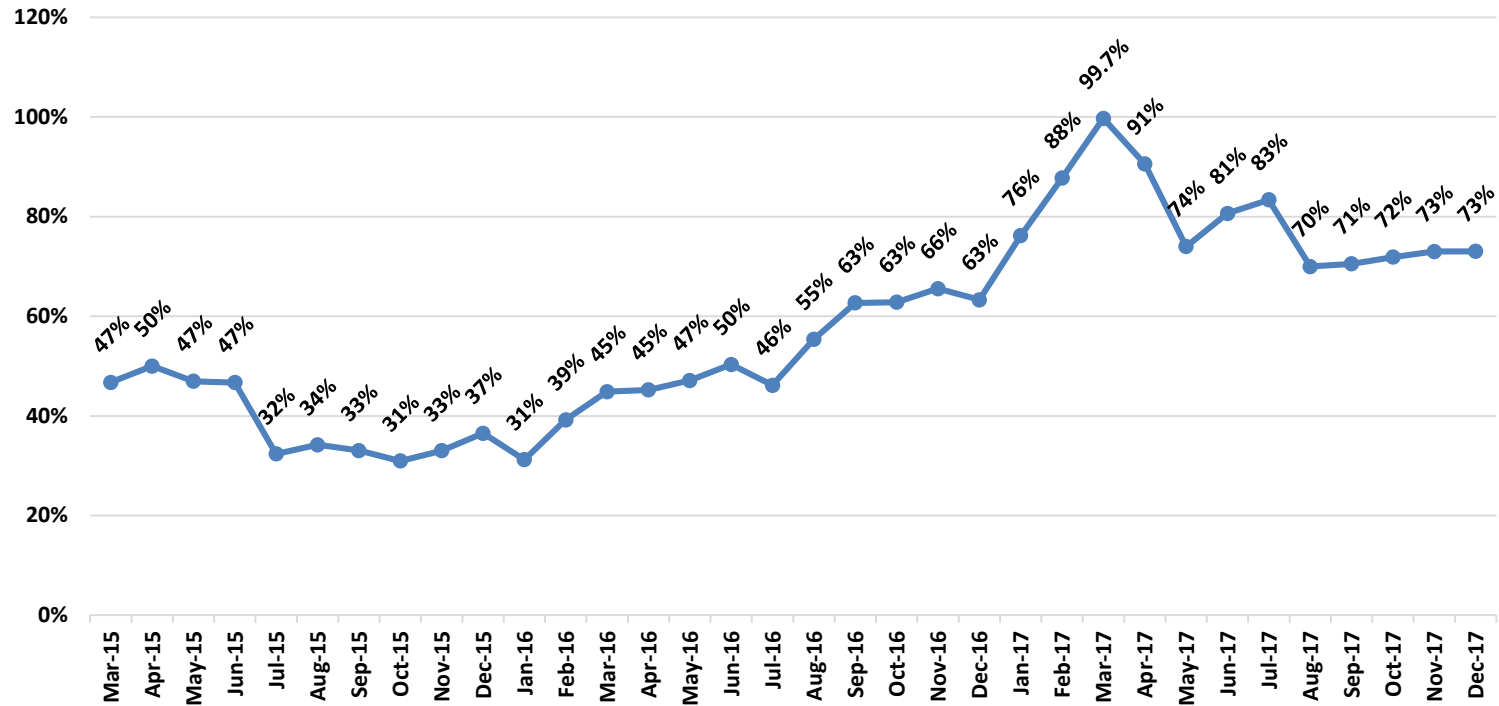


Enrollment Retention by Month

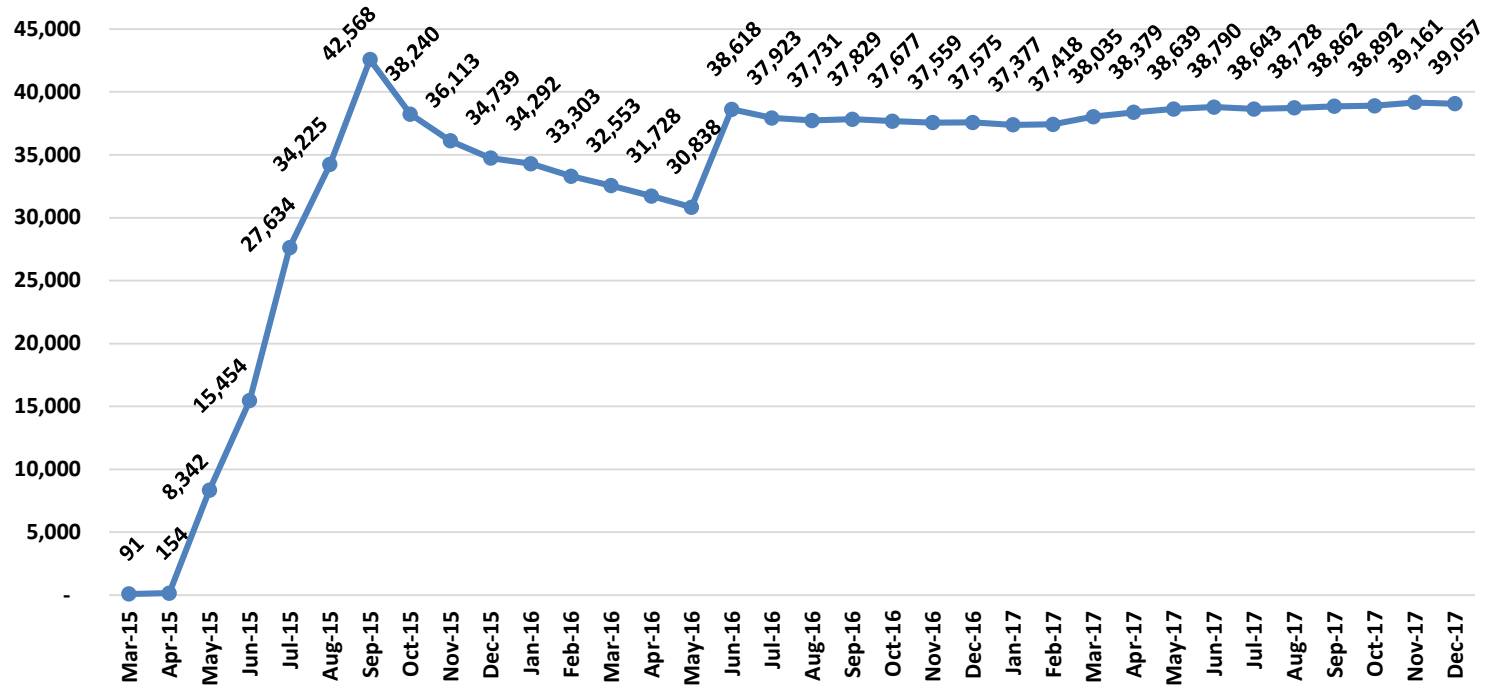
Blue- Current Red- Original



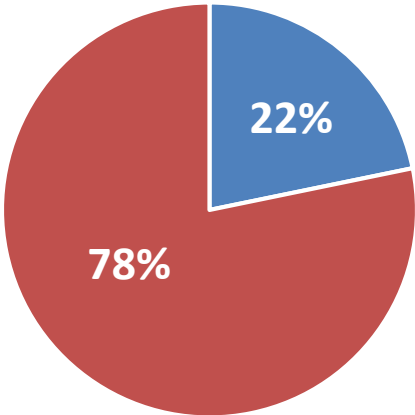
Enrollment Retention Percentage by Month



Enrollment by Month



Opt-In & Passive Enrollment Percentage



■ Opt-In ■ Passive

Region	Opt-In	Passive
(1) Upper Peninsula	442	3,966
(4) Southwest	1,566	7,666
(7) Wayne	5,541	15,793
(9) Macomb	1,044	3,077
Total	8,593	30,502

Enrollment by Level of Care and Region

Region	LOC Categories				
	HCBS	NF	Community	CMCF	Total
1 (Upper Peninsula)	39	278	3,799	200	4,316
4 (Southwest)	65	345	8,569	55	9,034
7 (Wayne)	648	839	18,757	0	20,244
9 (Macomb)	109	303	4,451	3	4,866
December Total	861	1,765	35,576	258	38,460
November Total	862	1,767	35,689	270	38,588
Difference	(1)	(2)	(113)	(12)	(128)
Percentage	-0.1%	-0.5%	-0.3%	-4.4%	-0.3%

HCBS: Home & Community Based Service Waiver

NF: Privately Owned Nursing Facility or Hospital LTC Units

CMCF: County Medical Care Facility

Enrollment by Level of Care and ICO

Region	LOC Categories				
	HCBS	NF	Community	CMCF	Total
Aetna	52	338	6,906	25	7,320
AmeriHealth	84	218	2,932	1	3,235
MI Complete Health	184	160	2,096	1	2,441
HAP Midwest	324	220	4,238	0	4,782
Meridian	41	212	5,298	32	5,583
Molina	137	342	10,316	3	10,798
UPHP	39	278	3,800	208	4,325
Total	861	1,768	35,586	269	38,484

HCBS: Home & Community Based Service Waiver

NF: Privately Owned Nursing Facility or Hospital LTC Units

CMCF: County Medical Care Facility

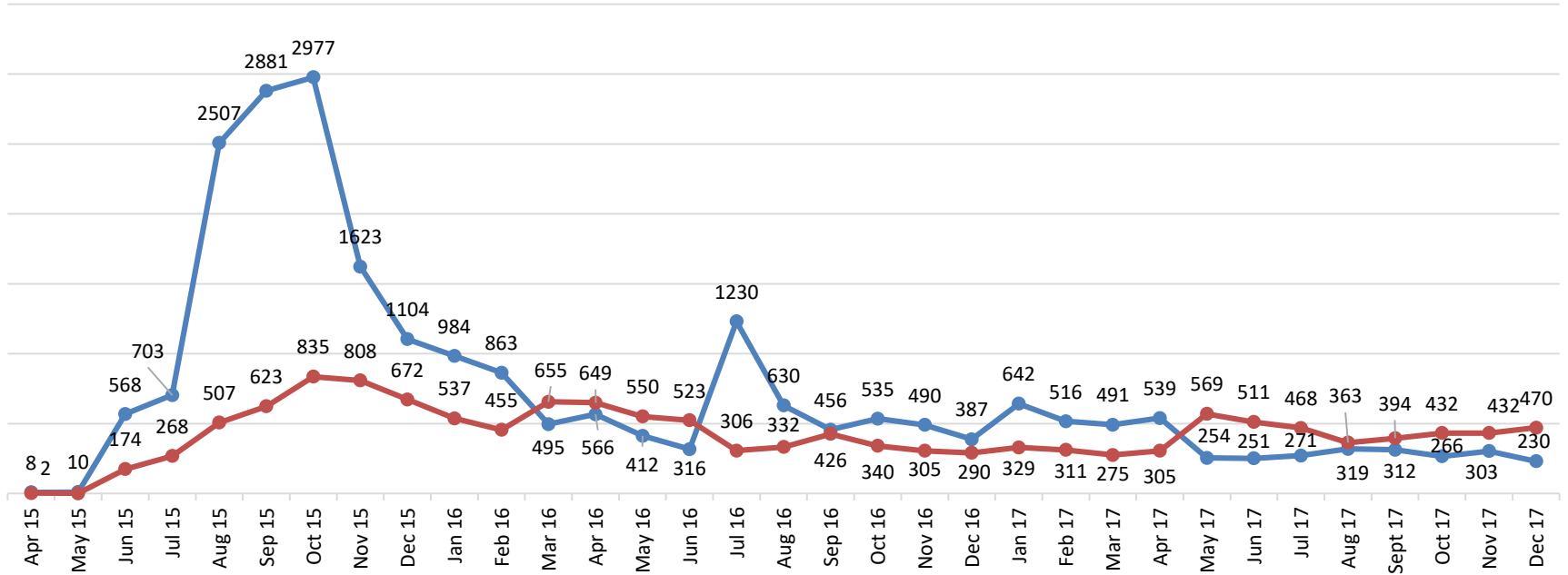
ICO Enrollment by Region

	Region 1	Region4	Region 7	Region 9
UPHP	4,356			
Meridian		5,659		
Aetna		3,523	3,202	687
AmeriHealth			2,691	605
MI Complete			2,062	415
HAP Midwest			3,975	846
Molina			9,400	1,539

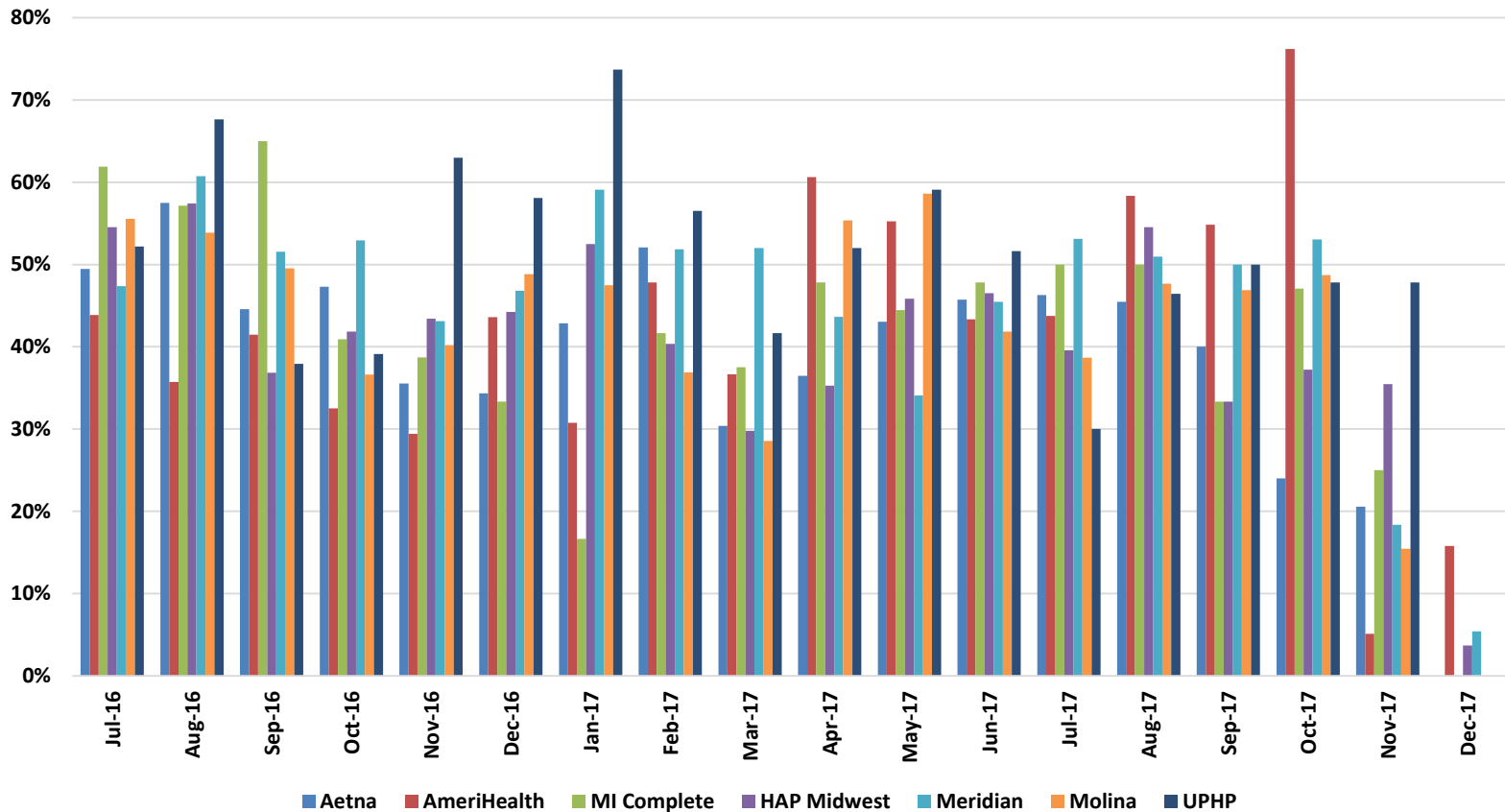
	Region 1	Region4	Region 7	Region 9
UPHP	100%			
Meridian		61%		
Aetna		39%	15%	17%
AmeriHealth			13%	15%
MI Complete			10%	10%
HAP Midwest			18%	20%
Molina			44%	38%

Disenrollment by Month

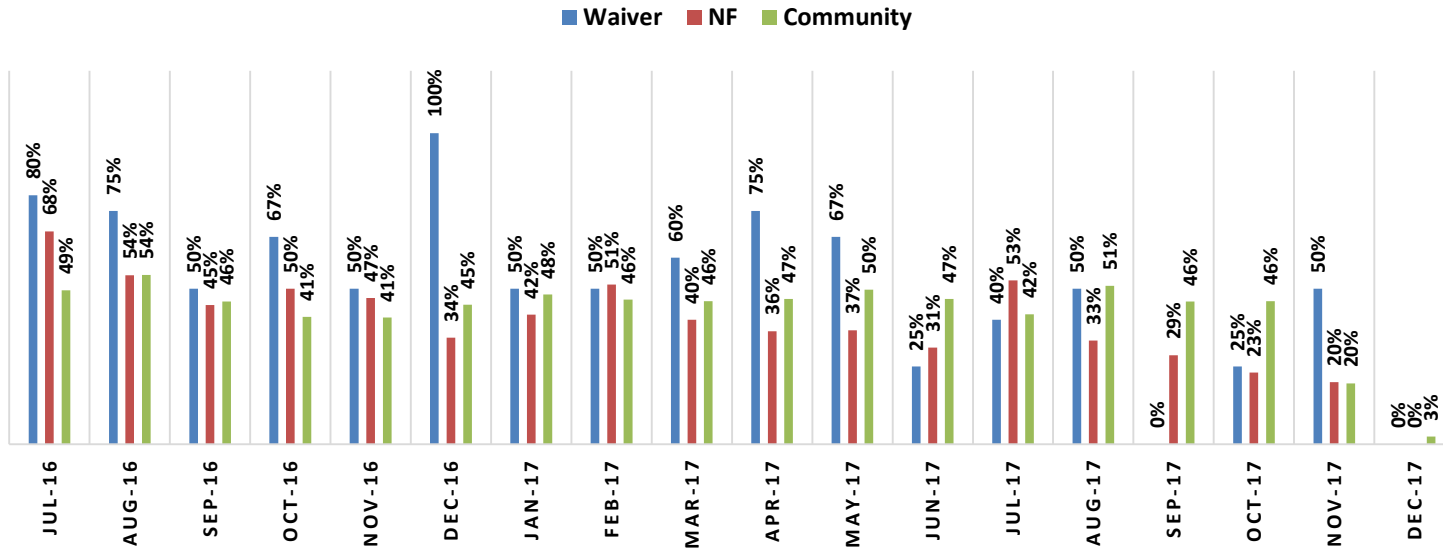
Blue – Voluntary Red- Involuntary



ICO Deeming Retention Percentage by Month



ICO Deeming Retention Percentage by LOC and Month



Information provided in the Dashboard is
based on data available from the MDHHS
CHAMPS Data Warehouse from
December 6th, 2017